



# rtc<sup>®</sup>

COUPLING TECHNOLOGY



## COLLECTORS

# 117-118-119

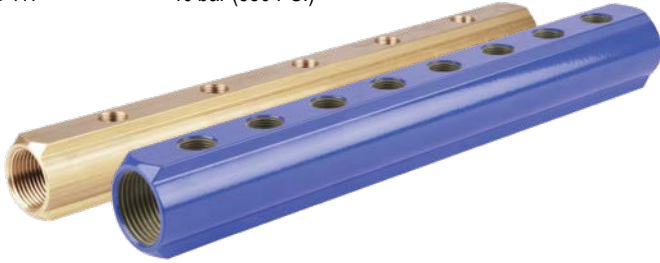
rtc TYPE



**rtc** 117 BRASS COLLECTORS - MESSING VERTEILER

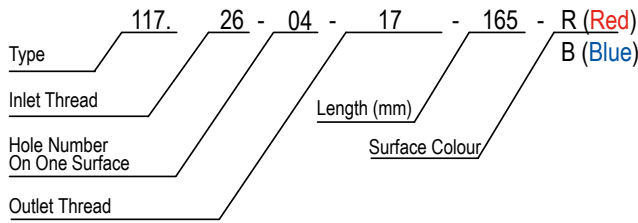
Temperature Range - Temperaturbereich  
-50°C +300°C (-58°F +572°F)

Max. Working Pressure - Max. Betriebsdruck  
rtc 117 40 bar (580 PSI)



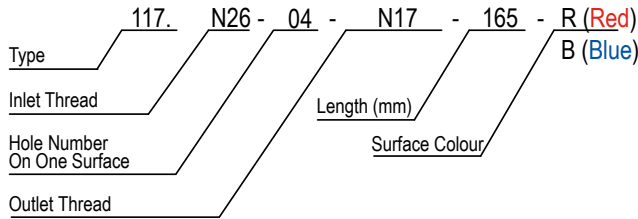
**rtc** Example Coding - Beispielcodierung

117 BSP Thread (Standart Brass Collectors)



117 NPT Thread (Brass Collectors)

ONLY Available for 3/4" - NUR für 3/4 verfügbar



Thread Size Explanations

- BSP=G
- NPT=N
- (1/4" = 13)
- (3/8" = 17)
- (1/2" = 21)
- (3/4" = 26)
- (1" = 33)
- (1-1/4" = 42)



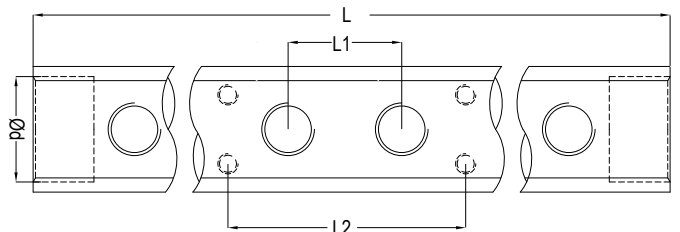
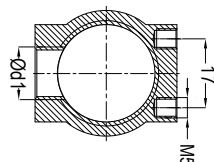
Collector Carrier

Order No:

117 CC 70 - (For 117.26 & 117.33)

117 CC 90 - (For 117.26 & 117.33)

117 CC 150 - (For 117.42)



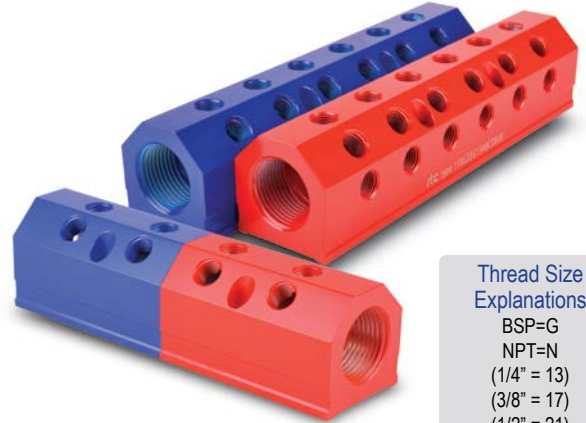
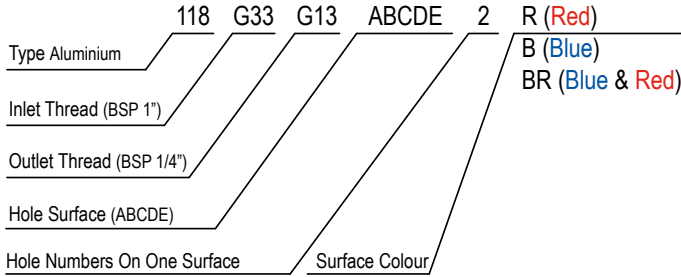
Ød Inlet	Order No / Bestellnr.	Ød1 Outlet	L	L1	L2				
3/4	117.26-04-13-150	1/4	150	30	70				
	117.26-05-13-180		180						
	117.26-06-13-210		210						
	117.26-07-13-240		240						
	117.26-08-13-270		270						
	117.26-09-13-300		300						
	117.26-10-13-330		330						
	117.26-11-13-360		360						
	117.26-12-13-390		390						
	3/8		117.26-04-17-165			3/8	165	35	70
			117.26-05-17-200				200		
			117.26-06-17-235				235		
			117.26-07-17-270				270		
			117.26-08-17-305				305		
117.26-09-17-340		340							
117.26-10-17-375		375							
117.26-11-17-410		410							
117.26-12-17-445		445							
1		117.33-04-13-165	1/4	165	35		70		
		117.33-05-13-200		200					
		117.33-06-13-235		235					
		117.33-07-13-270		270					
		117.33-08-13-305		305					
	117.33-09-13-340	340							
	117.33-10-13-375	375							
	117.33-11-13-410	410							
	117.33-12-13-445	445							
	1	117.33-04-17-165		3/8		165		35	70
		117.33-05-17-200				200			
		117.33-06-17-235				235			
		117.33-07-17-270				270			
		117.33-08-17-305				305			
117.33-09-17-340		340							
117.33-10-17-375		375							
117.33-11-17-410		410							
117.33-12-17-445		445							
1		117.33-04-21-210	1/2		210	50	70		
		117.33-05-21-260			260				
		117.33-06-21-310			310				
		117.33-07-21-360			360				
		117.33-08-21-410			410				
	117.33-09-21-460	460							
	117.33-10-21-510	510							
	117.33-11-21-560	560							
	117.33-12-21-610	610							
	117.33-16-21-810	810							
	117.33-20-21-1010	1010							
	1-1/4	117.42-04-17-196		3/8	196			40	150
		117.42-05-17-236			236				
		117.42-06-17-276			276				
117.42-08-17-356		356							
117.42-10-17-436		436							
117.42-12-17-516		516							
117.42-16-17-676		676							
1-1/4		117.42-04-21-226	1/2		226	50	150		
		117.42-05-21-276			276				
		117.42-06-21-326			326				
		117.42-07-21-376			376				
		117.42-08-21-426			426				
		117.42-10-21-526			526				
		117.42-12-21-626			626				

Temperature Range - Temperaturbereich

-50°C +400°C (- 58°F +752°F)

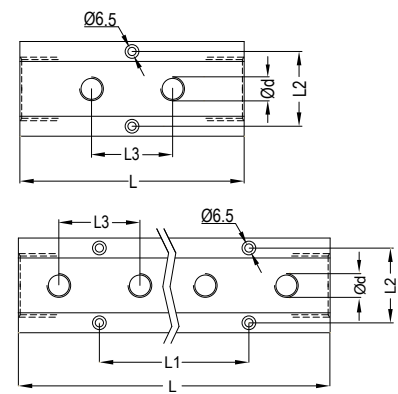
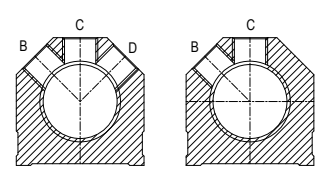
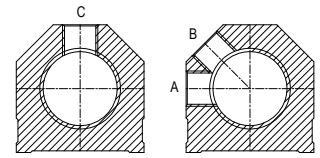
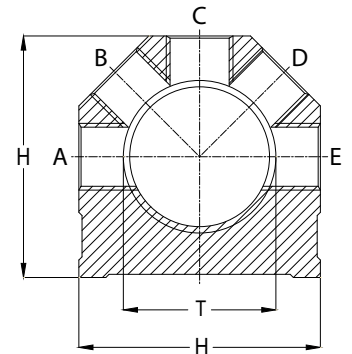
Max. Working Pressure - Max. Betriebsdruck

rtc 118 40 bar (580 PSI)

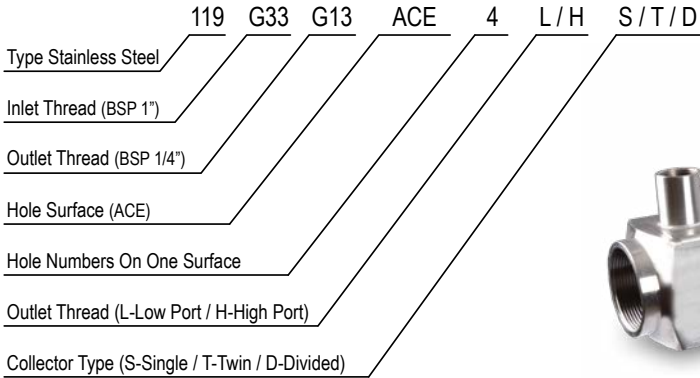


**Thread Size Explanations**  
 BSP=G  
 NPT=N  
 (1/4" = 13)  
 (3/8" = 17)  
 (1/2" = 21)  
 (3/4" = 26)  
 (1" = 33)  
 (1-1/4" = 42)  
 (1-1/2" = 48)  
 (2" = 60)

T Inlet Thread	Ød Outlet Thread	Number of Holes on one Surface	L				L1				L2	L3	H		
			A	C	AC	BD	ACE	ABC	BCD	ABCDE				A	C
3/4	1/4	2	74				0				35	31	44.5		
		4	132				62								
		6	194				124								
		8	256				186								
	3/8	2	90	110			0	0			35	40	44.5		
		4	165	190	200		80	100							
		6	245	270	290		160	180							
		8	325	350			240	260							
1	1/4	2	103				0				38	40	51		
		4	183				80								
		6	263				160								
		8	343				240								
	3/8	2	103	123			0	0			38	40	51		
		4	183	210			80	100							
		6	263	290			160	180							
		8	343	370			240	260							
1-1/4	1/4 - 3/8 - 1/2	2	152				0				50	51	66		
		4	254				101.6								
		6	355				203.2								
		8	457				304.8								
1-1/2	1/4 - 3/8 - 1/2	2	152				0				57	51	76		
		4	254				101.6								
		6	355				203.2								
		8	457				304.8								
	3/4	2	164.5	164.5			0	0			57	63.5	76		
		4	270	354.5			101.6	191							
		6	417.5	481.5			254	318							
		8	554.5	608.5			381	445							
2	3/8 - 1/2 - 3/4	2	178				0				72.5	63.5	89		
		4	305				127								
		6	432				254								
		8	559				381								



**rtc** 119 STAINLESS STEEL COLLECTORS



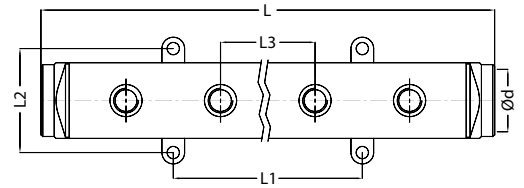
**Code Examples**

- 119G33G13ACE4LS - Single Profile Low Port
- 119G33G13ACE4HS - Single Profile High Port
- 119G33G13AC4LT - Twin Profile Low Port
- 119G33G13AC4HT - Twin Profile High Port
- 119G33G13ACE4LD - Divided Profile Low Port
- 119G33G13ACE4HD - Divided Profile High Port

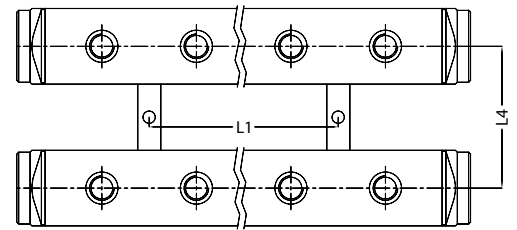
**Thread Size**

- BSP=G
- NPT=N
- (1/4" = 13)
- (3/8" = 17)
- (1/2" = 21)
- (3/4" = 26)
- (1" = 33)

**Single Profile**

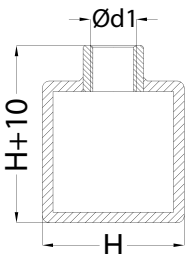


**Twin Profile**



T Inlet Thread	Ød Outlet Thread	Number of Holes on one Surface	L	L1	L2	L3	L4	H
1	1/4 - 3/8	2	140	0	55	50	75	40
		4	240	100				
		6	340	200				
		8	440	300				
1-1/4	1/4 - 3/8 - 1/2	2	140	0	65	50	90	50
		4	240	100				
		6	340	200				
		8	440	300				
1-1/2	1/4 - 3/8 - 1/2	2	140	0	65	50	100	50
		4	240	100				
		6	340	200				
		8	440	300				

**High Port**



**Low Port**

