



# rtc<sup>®</sup>

COUPLING TECHNOLOGY



# 103

rtc TYPE



**Temperature Range - Temperaturbereich**  
-20°C +100°C (-4°F +212°F) Nitril (N)  
-10°C +180°C (+14°F +356°F) FPM (V)

**Flow size - Nennweiten**

rtc 103.06	7 mm
rtc 103.07	8 mm
rtc 103.08	10 mm
rtc 103.11	11 mm
rtc 103.12	12 mm
rtc 103.15	15 mm
rtc 103.19	19 mm
rtc 103.25	25 mm
rtc 103.33	33 mm

**Material**

Coupler Body- Kupplungsgrundkörper	Stainless steel - Edelstahl
Sleeve - Hülse	Hardened alloysteel - Gehärteter Stahl
Valve - Ventil	Stainless steel - Edelstahl
Springs - Federn	Stainless steel - Edelstahl
Seal - Dichtung	FPM (V)
Balls - Kugeln	Stainless steel - Edelstahl
Plug - Nippel	Hardened stainless steel - Gehärteter Edelstahl

**Options - Optionen**

- N** NBR Seal - NBR Dichtung
- R** Red Body - Grundkörper Rot
- P** Pressure release valf -  
Druckentlastungsventil

**Using Area**

- On hydraulic oil circuits
- Hydraulic test units
- Injection moulding industries / core pullers

**Anwendungsbereiche**

- Hydraulische Verbindungen
- Hydraulik Prüfstände
- Kunststoffindustrie / Kernzüge

**Safety type coupler  
for disconnect protection**

**Sicherheitsfunktion  
für das ungewollte  
Trennen**



**Max. Working pressure / Max. Arbeitsdruck (bar)**

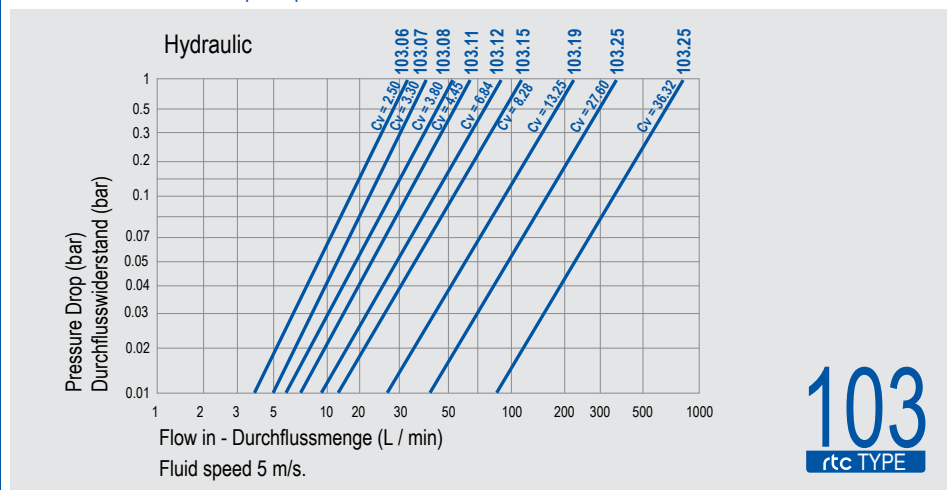
Size / Größe	06	07	08	11	12	15	19	25	33
Connected	800	500	450	450	400	400	400	350	350
Disconnected	180	180	180	180	180	180	180	180	180

**Max. Residual pressure for connection under pressure (bar)**

**Max. Restdruck für die Verbindung unter Druck (bar)**

Socket / Kupplung	180	180	180	180	180	180	180	180	180
Plug / Nippel	50	50	50	50	50	50	50	50	50

**Flow Rate vs Pressure Drop Graph / Durchflussrate vs Druckabfall**



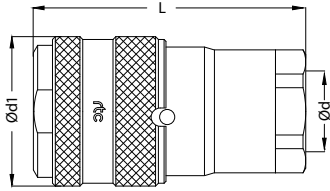
**103**  
rtc TYPE

**rtc** TYPE 103

Female thread socket / Kupplung mit Innengewinde



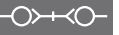
Socket / Kupplung



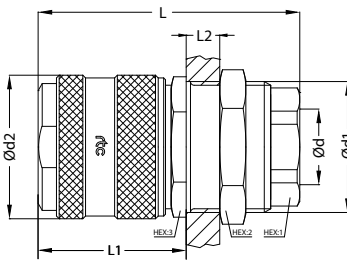
Size Größe	Order No / Bestellnr.	Ød	Ød1	L	HEX.
06	103.06 SFB 13	BSP 1/4	27	58	22
07	103.07 SFB 17	BSP 3/8	31.5	59.5	25
08	103.08 SFB 21	BSP 1/2	39	72	30
11	103.11 SFB 21	BSP 1/2	39	72	30
12	103.12 SFB 26	BSP 3/4	50	89	41
15	103.15 SFB 26	BSP 3/4	50	89	41
19	103.19 SFB 33	BSP 1	64.5	120	55
25	103.25 SFB 42	BSP 1-1/4	78	120	65
33	103.33 SFB 48	BSP 1-1/2	87	138	80

**rtc** TYPE 103

Panel mounted female thread socket / Kupplung mit Innengewinde und Schottverschraubung



Socket / Kupplung

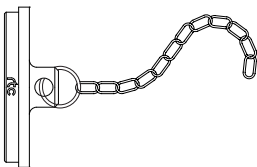


Size Größe	Order No / Bestellnr.	Ød	Ød1	Ød2	L	L1	L2	HEX.1	HEX.2	HEX.3
07	103.07 SFBP 17	BSP 3/8	M30x1	31.5	59.5	39	8	25	34	32
08	103.08 SFBP 21	BSP 1/2	M34x1	39	72	42	13	30	38	36
11	103.11 SFBP 21	BSP 1/2	M34x1	39	72	42	13	30	38	36
12	103.12 SFBP 26	BSP 3/4	M44x1.5	50	89	48	22	41	54	52
15	103.15 SFBP 26	BSP 3/4	M44x1.5	50	89	48	22	41	54	52

**rtc** TYPE 103

Dust cup for socket / Staubkappe für Kupplung

Dust Cup / Staubkappe

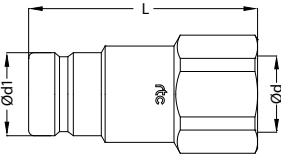


Size Größe	Order No / Bestellnr.
06	103.06 SD 00
07	103.07 SD 00
08	103.08 SD 00
11	103.11 SD 00
12	103.12 SD 00
15	103.15 SD 00
19	103.19 SD 00
25	103.25 SD 00



Female thread plug / Nippel mit Innengewinde

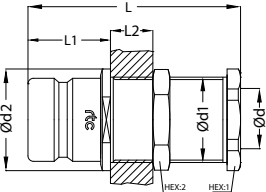
TYPE 103 **rtc**

Plug / Nippel	Size Größe	Order No / Bestellnr.	Ød	Ød1	L	HEX.
	06	103.06 PFB 13	BSP 1/4	14.2	48.5	19
	07	103.07 PFB 17	BSP 3/8	18	50.3	22
	08	103.08 PFB 21	BSP 1/2	22.8	63	30
	11	103.11 PFB 21	BSP 1/2	22.8	63	30
	12	103.12 PFB 26	BSP 3/4	30.8	74	36
	15	103.15 PFB 26	BSP 3/4	30.8	74	36
	19	103.19 PFB 33	BSP 1	40.1	95	45
	25	103.25 PFB 42	BSP 1-1/4	51	107.5	55
	33	103.33 PFB 48	BSP 1-1/2	64.5	118	70



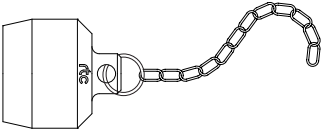
Panel mounted female thread plug / Nippel mit Innengewinde und Schottverschraubung

TYPE 103 **rtc**

Plug / Nippel	Size Größe	Order No / Bestellnr.	Ød	Ød1	Ød2	L	L1	L2	HEX.1	HEX.2
	07	103.07 PFBP 17	BSP 3/8	M22x1	30	50.3	21	15	24	24
	08	103.08 PFBP 21	BSP 1/2	M26x1	36	63	24.5	25.5	30	32
	11	103.11 PFBP 21	BSP 1/2	M26x1	36	63	24.5	25.5	30	32
	12	103.12 PFBP 26	BSP 3/4	M34x1	41	74	30	25	41	38
	15	103.15 PFBP 26	BSP 3/4	M34x1	41	74	30	25	41	38

Dust cup for plug / Staubkappe für Nippel

TYPE 103 **rtc**

Dust Cup / Staubkappe	Size Größe	Order No / Bestellnr.
	06	103.06 PD 00
	07	103.07 PD 00
	08	103.08 PD 00
	11	103.11 PD 00
	12	103.12 PD 00
	15	103.15 PD 00
	19	103.19 PD 00
25	103.25 PD 00	