



rtc[®]

COUPLING TECHNOLOGY



088

rtc TYPE



Compatible - Kompatibilität

ISO 15171-1

Parker PD

Temperature Range - Temperaturbereich

Nitril (N) -20°C +100°C (-4°F +212°F)

FPM (V) -10°C +180°C (+14°F +356°F)

Max. Working Pressure - Max. Betriebsdruck

rtc 088.04 420 bar (6.100 PSI)

Flow size - Nennweiten

rtc 088.04 4 mm

Material

Socket Body- Steel zinc plated -

Kupplungsgrundkörper Stahl verzinkt

Sleeve - Hülse Steel zinc plated - Stahl verzinkt

Valve - Ventil Steel zinc plated - Stahl verzinkt

Springs - Federn Stainless steel - Edelstahl

Seal - Dichtung Nitrile (N)

Balls - Kugeln Stainless steel - Edelstahl

Plug - Nippel Steel zinc plated - Stahl verzinkt

Applications

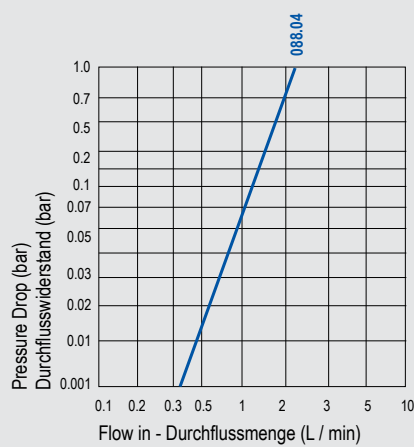
- Test benches
- Industrial equipment
- Mobile equipment

Anwendungen

- Prüfstände
- Industrielle Ausrüstung
- Mobile Geräte



Flow Rate vs Pressure Drop Graph



088
rtc TYPE

rtc TYPE 088 ISO 15171-1

Female thread socket / Kupplung mit Innengewinde



Socket / Kupplung

Size / Größe

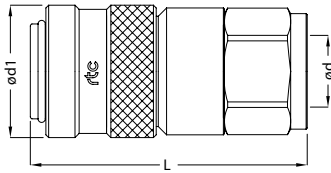
Order No / Bestellnr.

Ød

Ød1

L

HEX.



04

088.04 SFB 10	BSP 1/8	23.5	42	21
088.04 SNB 10	NPT 1/8	23.5	42	21
088.04 SFB 13	BSP 1/4	23.5	50	21
088.04 SNB 13	NPT 1/4	23.5	50	21
088.04 SMB 1415	M 14x1.5	23.5	52	21
088.04 SUB 1418	UNF 9/16-18	23.5	54	21
088.04 SUB 1110	UNF 7/16-20	23.5	55	21

rtc TYPE 088 ISO 15171-1

Male thread socket / Kupplung mit Aussengewinde



Socket / Kupplung

Size / Größe

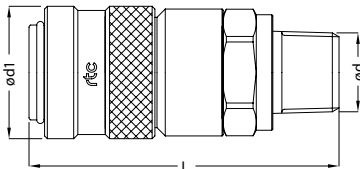
Order No / Bestellnr.

Ød

Ød1

L

HEX.



04

088.04 STB 13	NPT 1/4	23.5	52	21
---------------	---------	------	----	----

rtc TYPE 088 ISO 15171-1

Female thread plug / Nippel mit Innengewinde



Plug / Nippel

Size / Größe

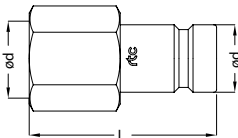
Order No / Bestellnr.

Ød

Ød1

L

HEX.



04

088.04 PNB 10	NPT 1/8	12.6	39	19
088.04 PNB 13	NPT 1/4	12.6	40	19
088.04 PUB 1418	UNF 9/16-18	12.6	40	19

rtc TYPE 088 ISO 15171-1

Male thread plug / Nippel mit Aussengewinde



Plug / Nippel

Size / Größe

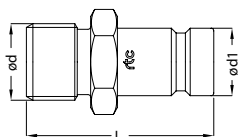
Order No / Bestellnr.

Ød

Ød1

L

HEX.



04

088.04 PMB 13	BSP 1/4	12.6	45	19
088.04 PTB 13	NPT 1/4	12.6	41	19
088.04 PMB 1215	M 12x1.5	12.6	45	19
088.04 PMB 1415	M 14x1.5	12.6	42	19
088.04 PUMB 1418	UNF 9/16-18	12.6	35	17